

The Billion Dollar Economy
Conway and Faulkner County

2005 Economic Report
and 2006 Forecast

Prepared for
The Conway Noon Rotary Club
55th Presentation



*The Center
of Business
Learning*

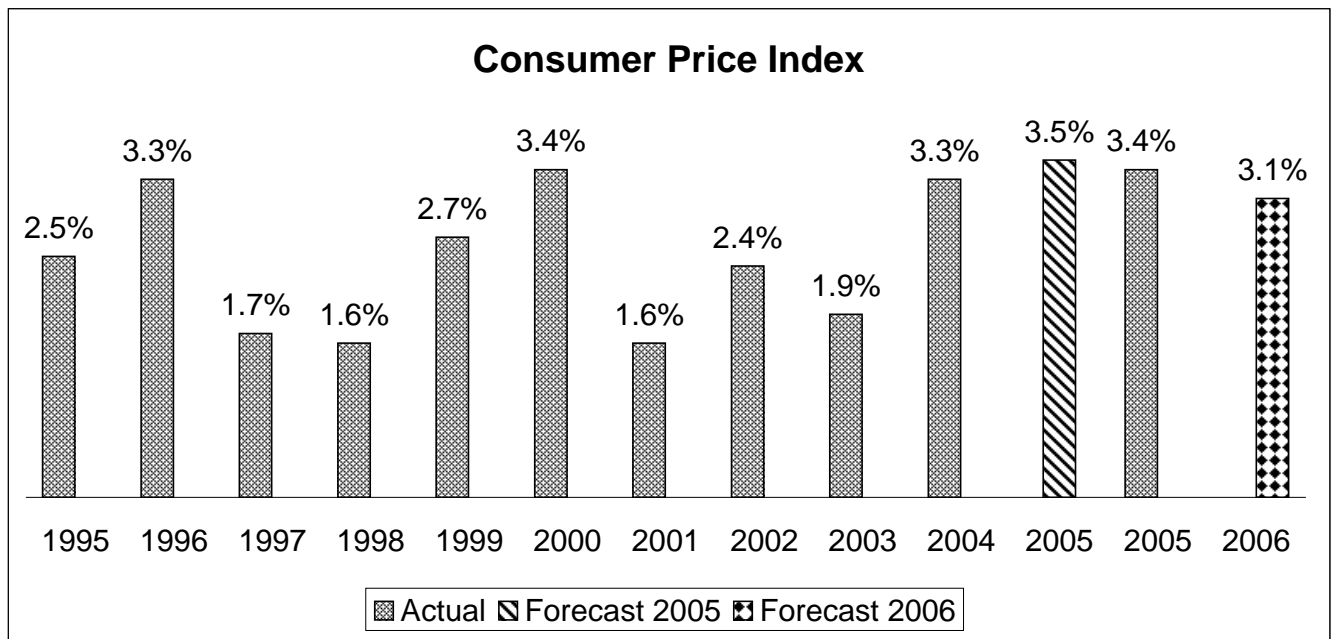
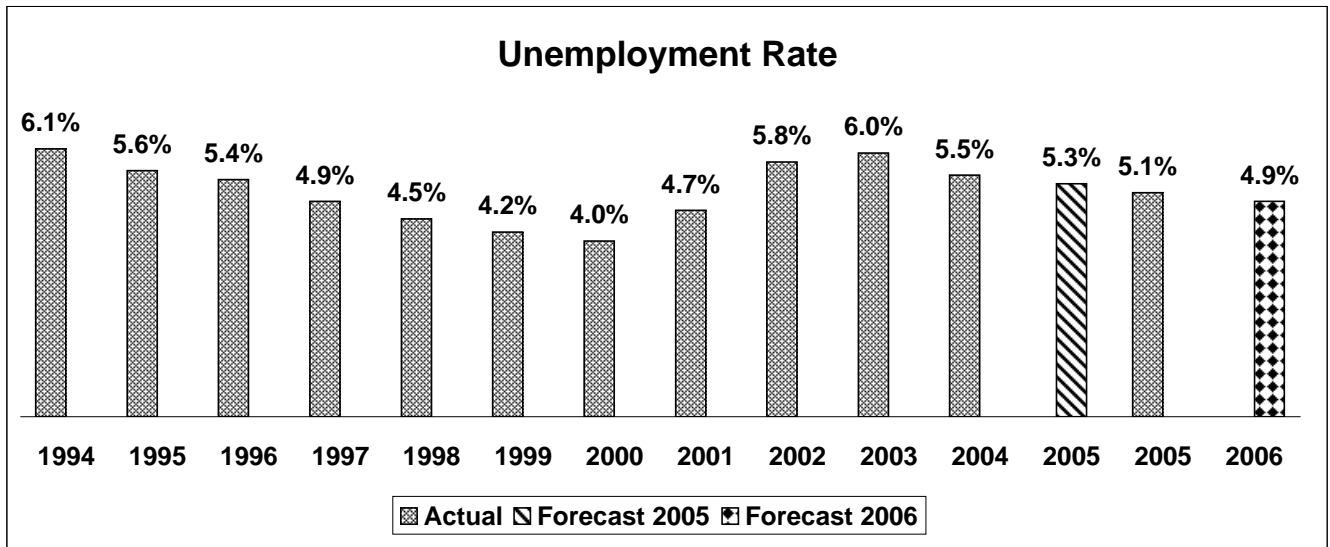
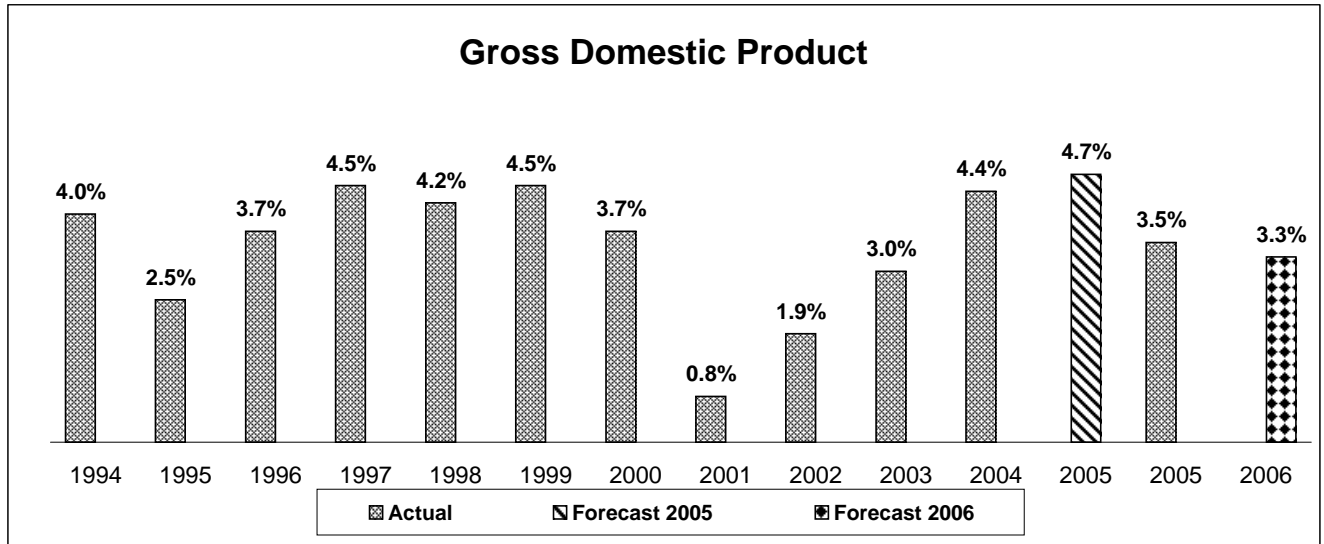
Advisor and Editor
Roger Lewis, Ph.D.
rogerlewis@conwaycorp.net

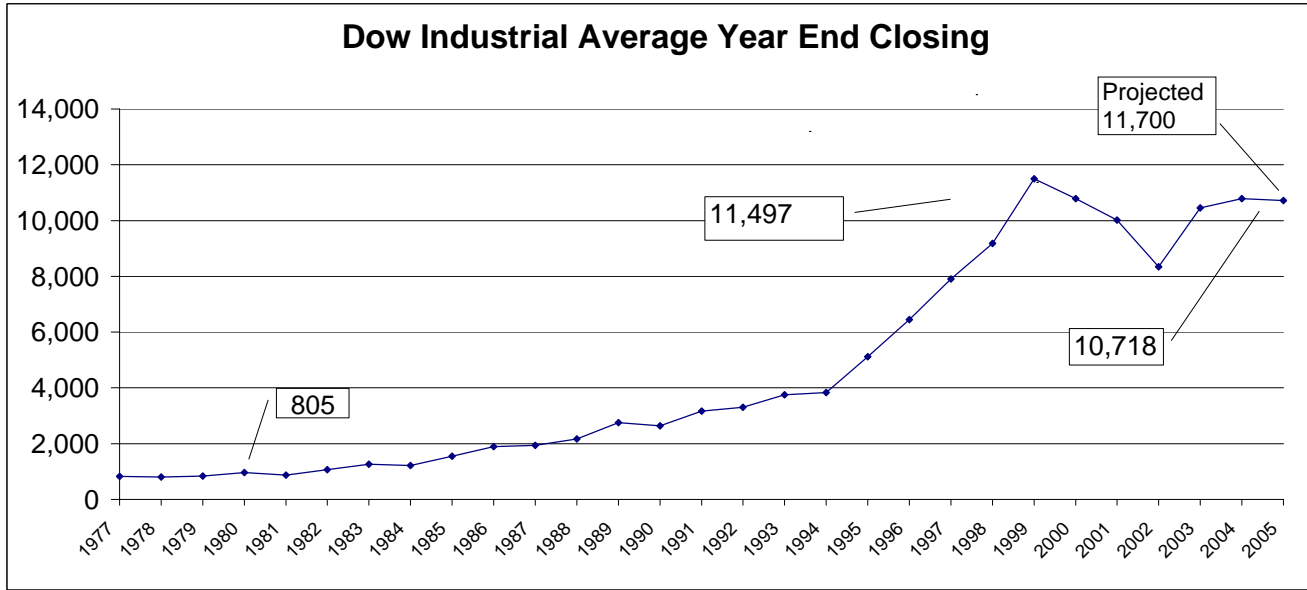
Prepared by
Amber Fason
2005 CBA Intern
UCA Mathematics and Economics Major
amberfason@gmail.com

Published by
Pat Cantrell, Ph.D., Dean
College of Business Administration
University of Central Arkansas
Patc@uca.edu

Sponsored by the Conway Noon Rotary Club
and the College of Business Administration at UCA

National Economy





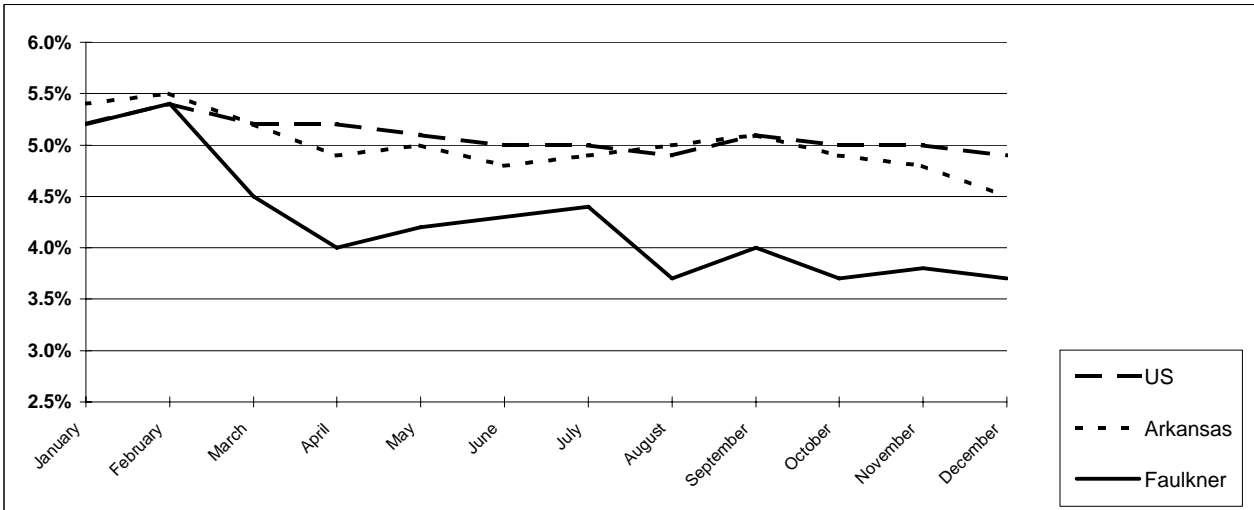
1976 1977 1978 1979 1980 1981 1982 1983 1984 1985 1986 1987 1988 1989 1990 1991 1992 1993 1994 1995 1996 1997 1998 1999 2000 2001 2002 2003 2004 2005
 1,005 831 805 839 964 875 1,066 1,259 1,212 1,547 1,896 1,939 2,169 2,753 2,634 3,168 3,301 3,754 3,834 5,117 6,448 7,908 9,181 11,497 10,787 10,021 8,341 10,454 10,783 10,718

Consumer Price Index By Component

All Urban Consumers for 2005

Energy	17.1 %
Medical Care	4.3
Food	2.3
Housing	4.0
Education & Communications	2.4
Other Goods & Services	3.1
Recreation	1.1
Transportation	4.8
Apparel	-1.1
All Items	3.4 %

Arkansas Economy 2005 Unemployment Rates*

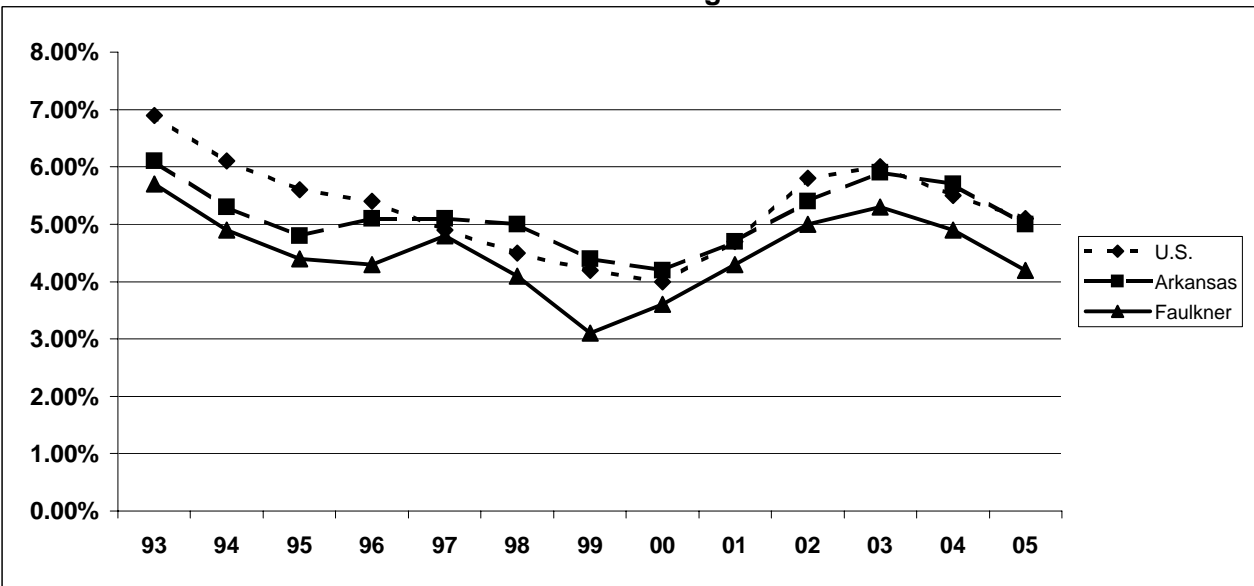


2005 Percent Unemployed By Month				Average Annual Unemployment Rate			
Month	U.S.	Arkansas	Faulkner	Year	U.S.	Arkansas	Faulkner
January	5.2	5.4	5.2	2005	5.1	5.0	4.2
February	5.4	5.5	5.4	2004	5.5	5.7	4.9
March	5.2	5.2	4.5	2003	6.0	5.9	5.3
April	5.2	4.9	4.0	2002	5.8	5.4	5.0
May	5.1	5.0	4.2	2001	4.7	4.7	4.3
June	5.0	4.8	4.3	2000	4.0	4.2	3.6
July	5.0	4.9	4.4	1999	4.2	4.4	3.1
August	4.9	5.0	3.7	1998	4.5	5.0	4.1
September	5.1	5.1	4.0	1997	4.9	5.1	4.8
October	5.0	4.9	3.7	1996	5.4	5.1	4.3
November	5.0	4.8	3.8	1995	5.6	4.8	4.4
December	4.9	4.5 **	3.7 **	1994	6.1	5.3	4.9
Average	5.1	5.0	4.2	1993	6.9	6.1	5.7

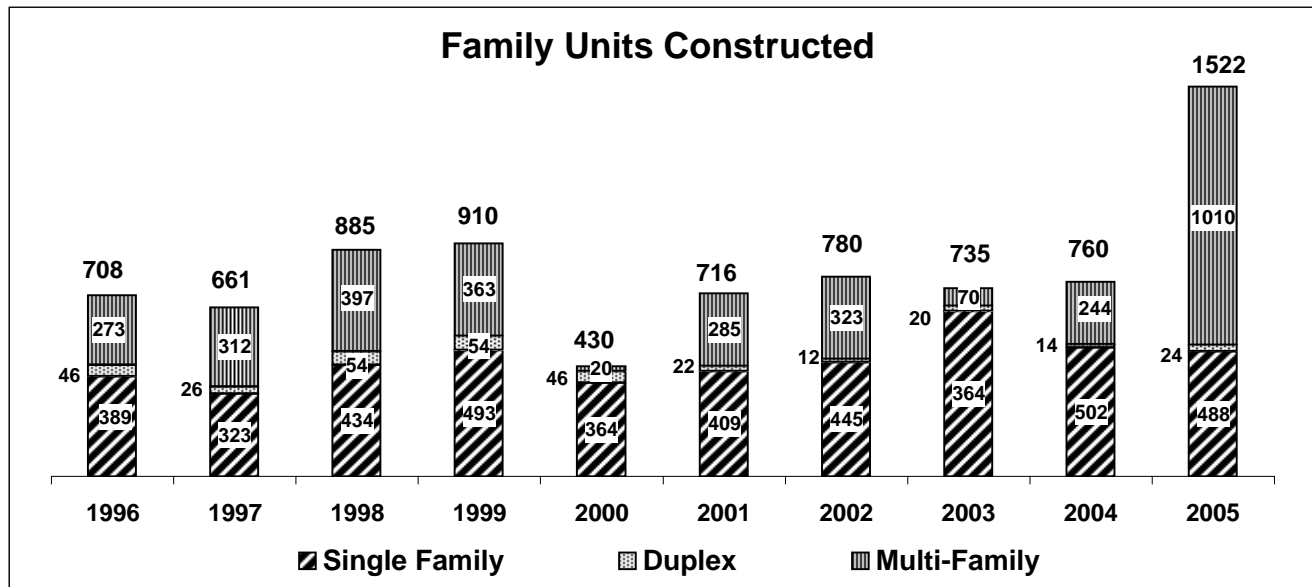
* Percentage of the work force unemployed, not seasonally adjusted for Avg Annual Rates, seasonally adjusted for Monthly Rates for and Arkansas but not seasonally adjusted for Faulkner County

**Preliminary data

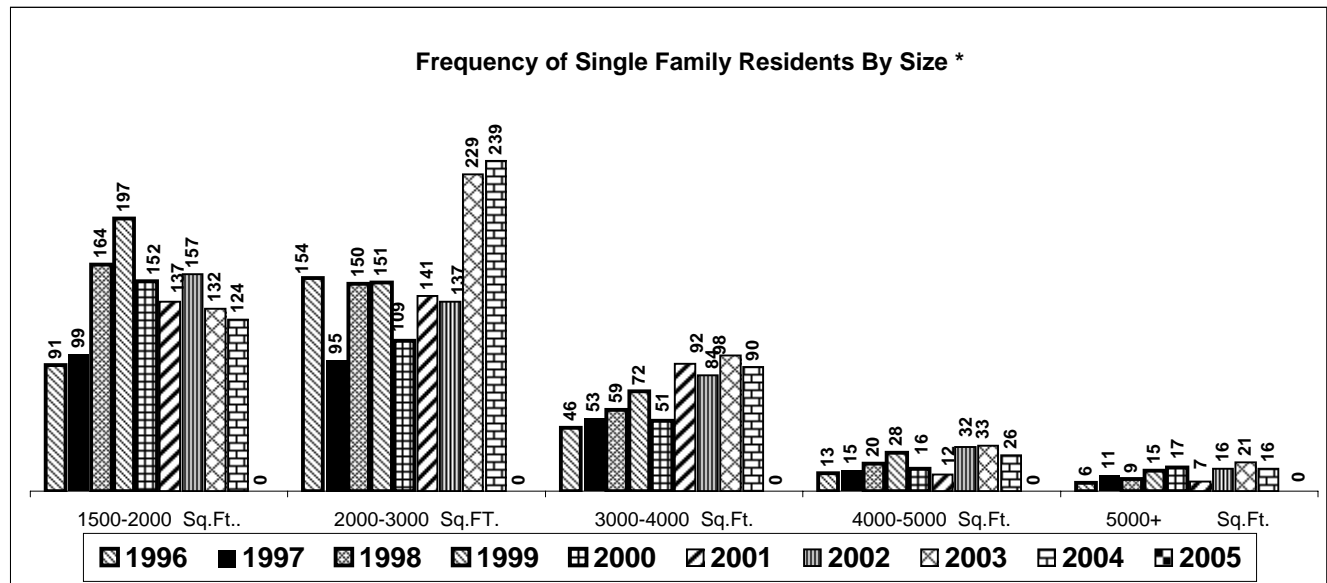
Average Unemployment Rates By Year 1993 Through 2005



Building Permits Issued and Family Units Constructed



	1996	1997	1998	1999	2000	2001	2002	2003	2004	2005	Ten Year	
Single Family	389	323	434	493	364	409	445	645	502	488	4492	449
Duplex	46	26	54	54	46	22	12	20	14	24	318	32
Multi-Family	273	312	397	363	20	285	323	70	244	1010	3297	330
Total Units	708	661	885	910	430	716	780	735	760	1522	8107	718
Apartment Complexes						31	46	9	16	86		



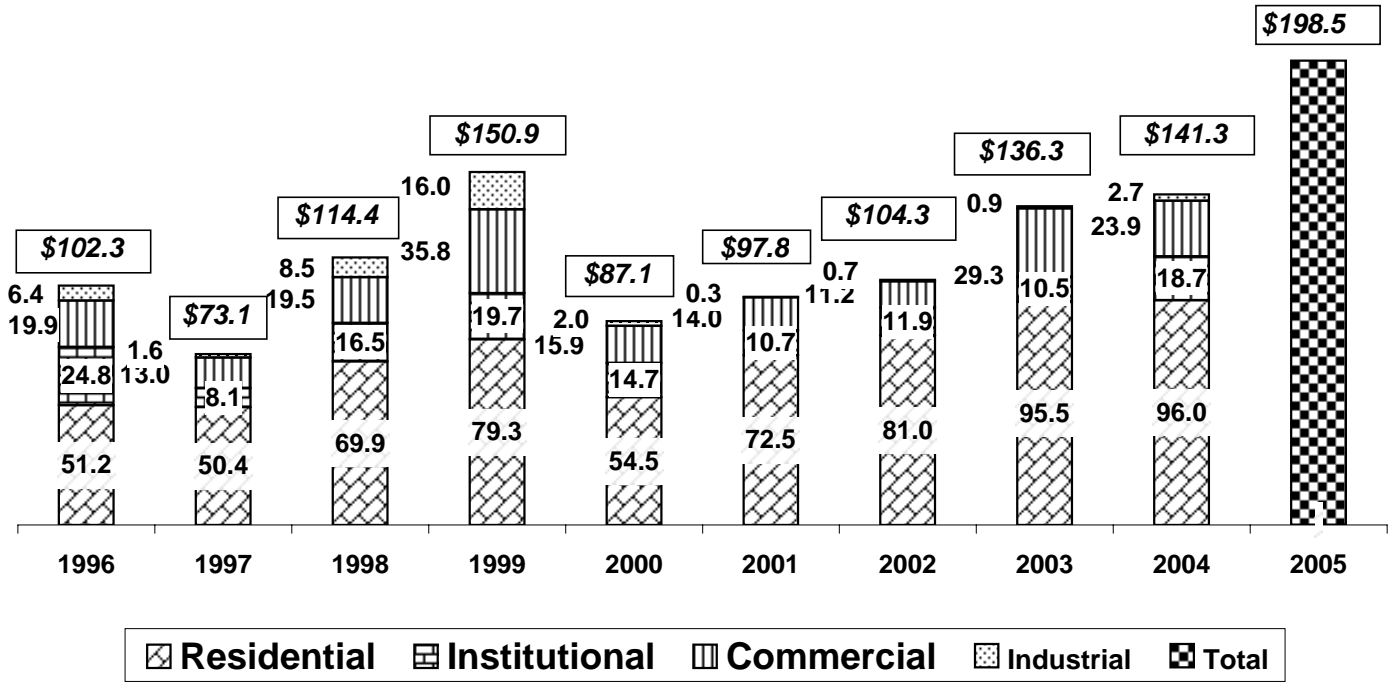
Averages for Single Family Residences	1996	1997	1998	1999	2000	2001	2002	2003	2004	2005
Square Feet Area*	2,299	2,447	2,385	2,460	2,491	2,615	2,605	2,502	2,682	-
Construction Cost Per Sq. Ft.	\$44.56	\$48.05	\$50.80	\$51.83	\$52.75	\$53.56	\$55.82	\$54.62	\$61.92	\$0.00
Average Cost	\$102,443	\$117,576	\$121,384	\$127,525	\$131,405	\$140,064	\$145,436	\$136,684	\$166,060	\$0

* Includes everything under roof

Average cost does not include the cost of the building site

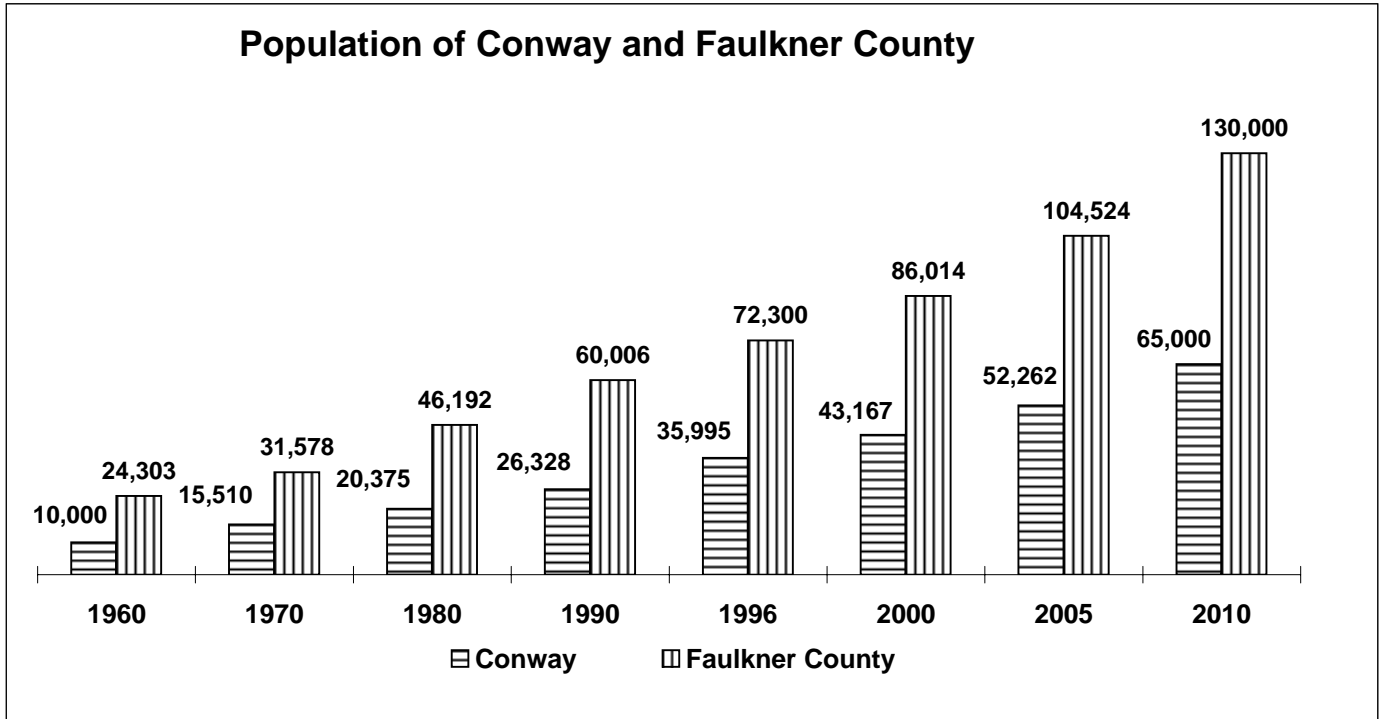
Data Source: Conway Planning Department Year End Reports

Value of Building Permits (In Million Dollars)



Year	Residential	Institutional	Commercial	Industrial	Other	Total	% Increase From Previous year
2005	--	--	--	--	--	\$198,545,106	40.5
2004	\$96,007,675	\$18,706,413	\$23,859,086	\$2,668,611	\$64,900	141,306,685	3.7
2003	95,455,494	10,504,659	29,326,351	928,000	112,780	136,327,284	30.8
2002	80,971,497	11,898,578	11,205,831	66,850	118,000	104,260,756	6.6
2001	72,470,919	10,700,955	14,046,546	262,758	290,930	97,772,108	12.3
2000	54,538,810	14,653,322	15,896,877	1,995,076	16,450	87,100,535	-42.3
1999	79,320,810	19,716,955	35,804,084	16,047,547	11,500	150,900,896	32.0
1998	69,864,986	16,488,126	19,490,470	8,514,222	0	114,357,804	56.4
1997	50,363,640	8,131,946	13,010,082	1,590,259	2,100	73,098,027	-28.5
1996	51,191,425	24,783,057	19,897,258	6,406,122	0	102,277,862	
Total	\$554,177,581	\$116,877,598	\$158,677,499	\$35,810,834	\$551,760	\$866,095,272	

Population of Conway and Faulkner County



	1960	1970	1980	1990	1996	2000	2005	2010
Conway	10,000	15,510	20,375	26,328	35,995	43,167	52,262	65,000
Faulkner County	24,303	31,578	46,192	60,006	72,300	86,014	104,524	130,000

Conway's population estimate for the year 2010 is based upon the five-year increase from 2000 to 2005, which is approximately 11,000.

Faulkner County Births and Deaths Per Year*

Year	Births	Deaths	Net Gain	Birth to Death Ratio
2005	1,318 **	662 **	656	2.0
2004	1,365 **	684	681	2.0
2003	1,314 **	685	629	1.9
2002	1,314	668	646	2.0
2001	1,202	616	586	2.0
2000	1,277	568	709	2.2
1999	1,178	567	611	2.1
1998	1,160	560	600	2.1
1997	1,073	563	510	1.9
1996	1,040	530	510	2.0
Ten Year Summary	12,241	6,103	6,138	2.0

* Birth and death figures are derived from birth and death certificates place of residents, not from where the birth or death took place.

** Provisional Data

Faulkner County Property Tax Assessment Values

Year	Real Estate			All Property *		
	Amount	Percent Increase		Amount	Percent Increase	
		Yearly	Since 92		Yearly	Since 92
2005	\$846,297,798	19.1	246.0	\$1,124,527,737	15.7	225.3
2004	710,560,552	5.2	190.5	971,982,764	4.3	181.2
2003	675,298,520	3.9	176.1	932,149,233	4.7	169.7
2002	649,886,552	17.9	165.7	890,195,263	13.3	157.5
2001	551,114,752	6.4	125.3	785,985,145	6.9	127.4
2000	518,098,162	7.1	111.8	735,058,219	7.9	112.6
1999	483,595,772	27.6	97.7	681,056,685	23.3	97.0
1998	379,129,163	3.7	55.0	552,296,656	2.8	59.8
1997	365,748,470	1.1	49.5	537,089,567	3.6	55.4
1996	361,653,000	17.6	47.9	518,255,000	17.4	49.9
1995	307,600,000	6.4	25.8	441,399,700	7.3	27.7
1994	289,063,000	8.1	18.2	411,318,000	12.6	19.0
1993	267,466,000	9.4	9.4	365,343,968	5.7	5.7
1992	244,585,000			345,683,719		

Taxable Values ***

Year	Real Estate	% of Assessment	All Property	% of Assessment
2005	\$747,131,613	88.3	\$1,025,527,737	91.2
2004	676,322,245	95.2	937,744,459	96.5
2003	630,882,143	93.4	887,672,856	95.2

Tax Assessment Values in Conway City Limits

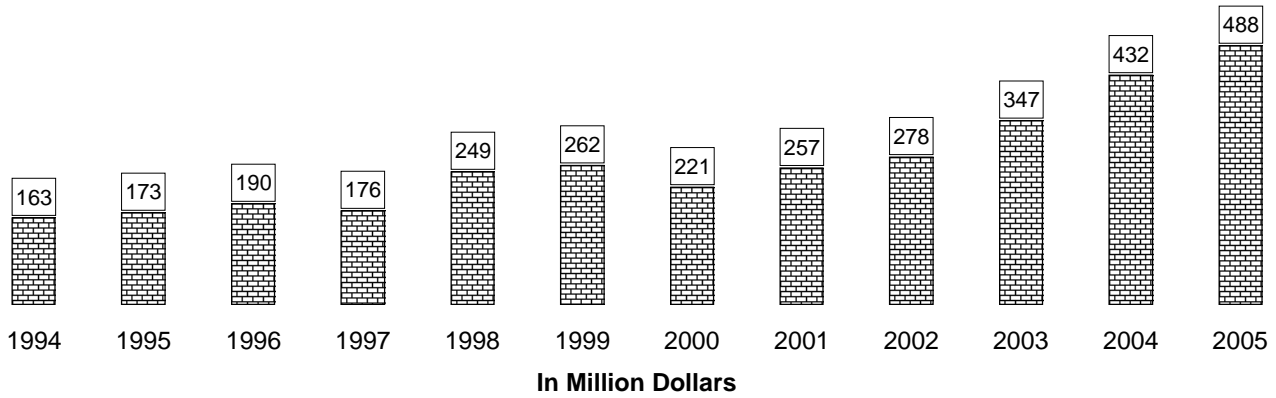
	Taxable Values			
	Real Estate	Percent of Faulkner Cnty	All Property	Percent of Faulkner Cnty
2005	521,920,108	61.7	\$694,662,700	61.8
2004	428,954,170	60.4	593,486,602	61.1
2003	405,857,050	60.1	570,777,106	61.2

* Includes Real Estate, Personal Property, Mineral Rights Utilities and Carriers

** Approximately 60% of the increase in 1996 is from reassessment and then in 1997 the reassessment was rolled back to previous levels.

*** Act 79 provides \$300 Homestead Exemption and freezes assessments for homeowner 65 years of age

Faulkner County Real Estate Sales *



1994 \$16,320,733	1995 \$172,809,667	1996 \$189,695,758	1997 \$175,969,394	1998 \$249,374,242	1999 \$262,489,000	2000 \$220,920,303
2001 \$257,225,333	2002 \$278,059,667	2003 \$346,937,333	2004 \$431,611,485	2005 \$488,112,667		

* Based on Revenue Tax Stamps Sold

Cost of Living Comparison of Conway Arkansas to the National Average and to Selected Cities ¹ Third-Quarter of 2005

	Percent of National Average							Average Rent	Average Home
	Total	% Difference from Conway**	Groceries	Housing	Utilities	Transportation	Health		
Conway	85.2	0.0	88.2	73.3	94.1	88.1	85.8	\$530	\$213,075
Fayetteville	91.4	7.3%	92.2	82.9	96.2	98.1	96.6	\$615	\$245,540
Fort Smith	86.7	1.8%	90.4	70.1	90.6	95.3	90.4	\$538	\$205,946
Hot Springs	86.6	1.6%	97.4	78.6	87.8	88.1	84.9	\$532	\$237,333
Little Rock-N. Little Rock	91.0	6.8%	94.0	79.6	90.4	96.4	96.5	\$651	\$224,775
Jonesboro	83.6	-1.9%	89.3	67.6	93.4	88.2	96.4	\$535	\$195,800
Boston, Massachusetts	138.9	63.0%	119.3	179.1	129.6	109.7	132.3	\$1,410	\$505,200
Tampa, Florida	97.2	14.1%	96.4	92.9	91.2	109.7	93.6	\$891	\$256,129
St. Louis, Missouri	92.6	8.7%	95.9	87.2	103.1	90.8	95.7	\$794	\$242,023
Dallas, Texas	93.3	9.5%	97.5	75.8	115.7	104.9	99.9	\$765	\$207,353
Seattle, Washington	115.8	35.9%	108.0	133.1	110.8	109.7	122.6	\$1,052	\$386,859
National Average	100.0	17.4%	100.0	100.0	100.0	100.0	100.0		

1 The national average cost for each index area is set at "100", and the indices for each place are then calculated based upon their relation to that average.

2 Average Rent - two bedrooms, unfurnished, excluding all utilities except water, 1 1/2 or 2 baths, 950 sq ft.

3 Average Home Price - 2,400 sq ft. living area, new house, 8,000 sq ft. lot, 4 bedrooms, 2 baths

** The difference is calculated by subtracting Conway's total percentage from one of the other cities total percentage, then dividing that number by Conway's total percentage, and finally multiplying by 100.

Data source: ACCRA - A nonprofit research organization, Arlington Virginia

Utilities
Conway Corporation Revenues & Capital Expenditures
In Million dollars

Year	All Departments		Residential		Total	
	Revenue	Capital Expenditures	Electric Customers Number	% Increase	Electric Customers Number	% Increase
2006 *	\$76.4	8.2	22,080	4.6	24,730	3.9
2005	70.9	9.0	21,102	3.4	23,795	3.2
2004	60.0	12.5	20,399	2.7	23,051	3.1
2003	54.8	11.7	19,863	4.7	22,363	4.3
2002	56.9	7.1	18,974	2.7	21,445	2.6
2001	55.7	10.7	18,479	1.8	20,893	1.8
2000	53.4	7.5	18,160	5.5	20,525	5.4
1999	47.8	10.2	17,206	4.8	19,480	6.2
1998	46.2	5.8	16,411	7.0	18,349	5.9
1997	42.4	5.2	15,332	4.5	17,324	4.3
1996	40.3	6.2	14,674	5.6	16,606	5.6
1995	37.7	4.3	13,897		15,732	

* Actual for 1995 through 2005, and budgeted for 2006

The 2005 census the population was 52,262 and there were 21,102 residential electric meters or 2.48 residents per meter.

Faulkner County and Conway Sales Tax Collections

Faulkner County 1/2% Sales Tax				
	2002	2003	2004	2005
January	\$410,162	\$446,183	\$493,631	\$537,698
February	351,979	324,613	389,646	\$430,408
March	367,011	353,142	411,682	\$431,360
April	363,330	393,093	436,842	\$470,216
May	373,657	391,729	393,984	\$463,224
June	368,674	400,615	409,284	\$463,664
July	399,304	399,520	445,436	\$518,109
August	366,464	397,732	439,910	\$503,187
September	416,783	419,747	457,070	\$492,416
October	407,245	409,122	445,108	\$515,587
November	363,172	400,755	436,395	\$478,047
December	366,029	391,255	424,744	\$493,440
Total	\$4,553,810	\$4,727,506	\$5,183,732	\$5,797,355
Increase Over Previous Year		\$173,697	\$456,226	\$613,623

Conway 1% Sales Tax				
	2002	2003	2004	2005
	\$705,897	\$768,801	\$851,269	\$921,656
	595,783	537,408	659,800	716,038
	582,749	600,671	674,041	723,210
	614,985	666,425	713,285	789,696
	631,771	634,036	658,319	786,840
	631,357	655,539	691,983	780,727
	660,905	663,037	733,234	884,396
	588,321	652,593	738,804	847,881
	642,705	693,033	767,880	932,034
	651,725	664,535	751,279	868,901
	603,447	676,474	740,283	807,455
	618,962	657,982	721,352	829,466
Total	\$7,528,607	\$7,870,532	\$8,701,530	\$9,888,301
Increase Over Previous Year		\$341,925	\$830,998	\$1,186,771

Conway Estimated Sales Receipts			
\$776,145,052	\$811,395,094	\$897,064,952	\$1,019,412,513

Conway Net Sales Tax Collections*

	Sales Tax Collections		Increase Over	Estimated
	@1%	@1/2%	Previous Yr.	Gross
			@ 1% Rate	Sales **
2005	\$9,888,301	\$4,944,201	13.6	1,019,412,513
2004	8,701,530	3,990,089	10.6	897,064,952
2003	7,870,532	3,935,266	4.5	811,395,094
2002	7,528,607	3,764,304	-2.6	776,145,052
2001	7,731,695	3,865,848	7.7	797,081,959
2000	7,179,085	3,589,543	8.3	740,111,856
1999	6,630,448	3,315,192	6.7	683,551,340
1998	6,212,823	3,096,188	4.8	640,497,216
1997	5,928,576	2,944,183	6.6	611,193,402
1996	5,563,496	2,779,524	6.8	573,556,289
1995	5,209,329	2,562,489	9.1	537,044,227

2005 Sales Tax Collections

For Other Faulkner County

Municipalities

Damascus	\$8,099
Enola	12,903
Holland	39,600
Mt. Vernon	3,883
Wooster	35,414
Total	\$99,898

Municipalities that do not have a local sales tax share in Faulkner County's 1/2% tax and the amount reported above is in addition to that reported by the County. Conway, Greenbrier and Vilonia have local sales tax

Faulkner County Net Sales Tax Collections

Sales Tax Collections	Increase Over
@1/2%	Previous Yr.
\$5,797,355	11.8
5,183,732	9.7
4,727,506	3.8
4,553,810	

* Revenues are the net amount the city receives after the state deducts administrative expenses for collection.

** Estimated Gross Sales is understated in that local sales tax is capped at \$25 per 1% of sales tax for purchases over \$2500. The estimates are based on the gross sales collected by the state before the approximate 3% for collection cost is deducted.

Estimated Retail Sales for 2005

Conway	\$1,019,412,513
Faulkner County Total	1,215,928,433
Percent Conway Sales are of Faulkner County	83.8%

Conway Sales Tax Collections (cont'd)

	Advertising & Promotion 2% Sales Tax Revenues				Prepared Food Tax
	2002	2003	2004	2005	2005
January	\$8,693	\$9,115	\$10,847	\$11,673	
February	8,980	9,015	10,451	10,968	
March	10,796	10,190	11,632	12,462	
April	13,233	13,705	14,732	16,135	
May	13,165	13,568	12,648	16,688	
June	15,503	15,166	18,480	18,145	
July	17,863	17,042	18,866	20,588	
August	15,561	16,209	16,736	18,743	
September	14,019	15,138	14,809	16,850	
October	12,383	12,759	15,399	17,139	
November	13,749	15,984	15,006	15,794	\$135,101
December	11,163	12,388	13,538	15,209	158,604 *
Total	\$155,108	\$160,278	\$173,143	\$190,395	\$293,705
Increase Over Previous Year		\$5,169	\$12,866	\$17,251	* Provisional data

Estimated Annual Motel Receipts

\$7,755,423	\$8,013,878	\$8,657,166	\$9,519,731
-------------	-------------	-------------	-------------

* Estimated collections if tax was in effect for the entire year

Number of Banking Institutions In Faulkner County and Total Deposits 1995-2005

	Number of Institutions	Number of Offices	Total Deposits*	Amount of Increase*	Percent Increase	Ten Year Increase	
						Number	Percent
2005	14	48	\$1,245,903	\$139,228	12.6		
2004	14	48	1,106,675	33,748	3.1	Institutions	6
2003	14	46	1,072,927	89,307	9.1		
2002	13	38	983,620	52,699	5.7	Offices	26
2001	12	35	930,921	73,570	8.6		
2000	13	37	857,351	78,639	10.1	Deposits	\$639,914
1999	11	29	778,712	69,173	9.7		
1998	9	22	709,539	54,504	8.3		
1997	8	21	655,035	17,359	2.7		
1996	7	21	637,676	31,687	5.2		
1995	8	22	605,989				

* In millions.

Bank Earnings of Institutions Represented in Faulkner County*

(Year to date as of September 30)

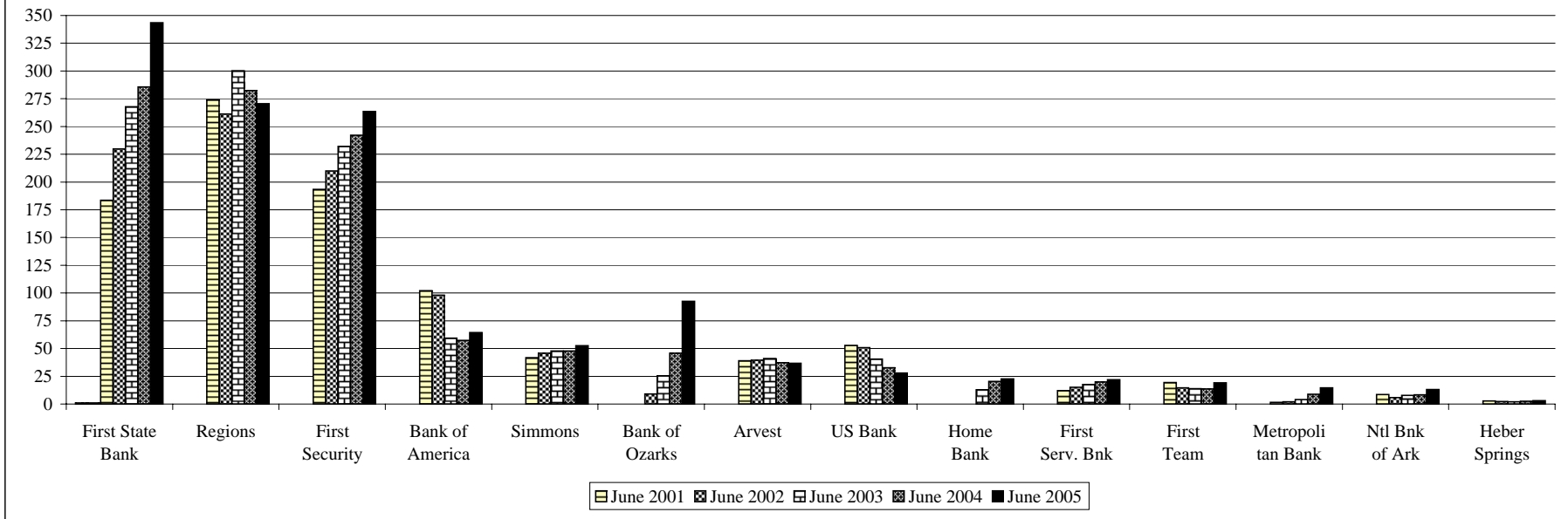
	% Return on Assets			% Return on Equity		
	2003	2004	2005	2003	2004	2005
US Bank	1.99	2.09	2.10	18.89	21.06	21.7
Bank of the Ozarks	1.83	1.86	1.79	21.62	22.97	22.88
National Bank of Arkansas	0.59	1.57	0.51	7.14	18.67	6.78
Bank of America	1.51	1.53	1.48	18.42	21.03	15.15
First Security Bank	1.37	1.45	1.19	16.31	17.71	15.03
Regions Bank	1.30	1.36	0.99	15.28	16.36	7.53
Simmons First National Bank	1.57	1.24	1.22	18.57	13.79	13.54
First Service Bank	1.41	1.14	1.10	16.70	13.87	13.66
First State Bank	0.93	1.05	1.23	8.48	7.72	10.87
Heber Springs State Bank	1.04	1.01	0.99	11.09	10.61	10.58
First Team Bank	1.03	0.99	0.61	10.86	10.13	4.81
Arvest Bank	1.00	0.95	1.14	12.01	9.45	11.88
Metropolitan National Bank	1.02	0.90	0.97	14.48	13.75	14.14
Home Bank of Ark	0.29	0.51	0.43	3.20	5.45	4.8
Average	1.21	1.26	1.12	13.78	14.47	12.38

* Earnings for each bank corporation, not limited to Faulkner County operation

** Ranked in descending order of 2004 return on assets.

Data Source: Federal Deposit Insurance Corporation

Faulkner County Bank Deposits In Million Dollars



Faulkner County Market Share Deposits of all FDIC-Insured Institutions Operating in Faulkner County (dollars in thousands)

Name ¹	June 30, 2001			June 30, 2002			June 30, 2003			June 30, 2004			June 30, 2005		
	Number of Offices	Deposits *	Market Share	Number of Offices	Deposits *	Market Share	Number of Offices	Deposits *	Market Share	Number of Offices	Deposits *	Market Share	Number of Offices	Deposits *	Market Share
1 First State Bank	6	\$183,667	19.73	8	\$229,727	23.36	9	\$267,710	24.97	10	\$285,716	26.65	10	\$343,401	27.56
2 Regions Bank	5	274,061	29.44	5	261,278	26.56	5	300,150	28.00	5	282,536	26.36	5	270,603	21.72
3 First Security Bank	6	193,280	20.76	6	209,880	21.34	7	231,952	21.64	7	242,103	22.59	8	263,533	21.15
5 Bank of America	3	102,052	10.96	3	98,011	9.96	3	59,247	5.53	3	57,450	5.36	3	64,346	5.16
6 Simmons	2	41,845	4.50	2	45,824	4.66	2	47,682	4.45	2	49,669	4.63	2	52,570	4.22
4 Bank of the Ozarks			0.00	1	9,107	0.93	3	25,455	2.37	4	45,773	4.27	4	92,607	7.43
7 Arvest Bank	3	38,874	4.18	3	39,457	4.01	3	41,011	3.83	3	37,246	3.47	3	36,591	2.94
8 US Bank	2	52,757	5.67	2	50,755	5.16	2	40,316	3.76	2	32,625	3.04	2	27,868	2.24
9 Home Bank of Arkansas			0.00			0.00	2	12,945	1.21	2	20,398	1.90	2	22,550	1.81
10 First Service Bank of Greenbrier	1	12,066	1.30	1	15,176	1.54	1	17,718	1.65	1	19,910	1.86	1	21,907	1.76
11 First Team Bank	3	19,410	2.09	3	14,523	1.48	3	13,809	1.29	3	13,595	1.27	3	19,105	1.53
12 Metropolitan	2	1,555	0.17	2	2,013	0.20	3	4,135	0.39	3	8,940	0.83	2	14,633	1.17
13 National Bank of Arkansas	1	8,623	0.93	1	5,742	0.58	2	7,765	0.72	2	8,417	0.79	2	13,121	1.05
14 Heber Springs State Bank	1	2,731	0.29	1	2,129	0.22	1	2,031	0.19	1	2,477	0.23	1	3,068	0.25
	35	\$930,921		38	\$983,622		46	\$1,071,926		48	\$1,071,926		48	\$1,245,903	
Average deposits per office		\$26,598			\$25,885			\$23,303			\$22,332			\$25,956	
Percentage of market for the top three banks			69.93			71.26			74.61			75.60			70.43

1. Name as chartered in 2005 and ranked ordered as deposits in 2005
* Faulkner County Deposits

Vehicles Sold By Authorized New Car Dealers *

New Vehicles:											2004-2005
	<u>1996 **</u>	<u>1997 **</u>	<u>1998</u>	<u>1999</u>	<u>2000</u>	<u>2001</u>	<u>2002 ***</u>	<u>2003</u>	<u>2004</u>	<u>2005</u>	Percent Increase
Total (New)	3295	3578	3792	3877	4216	3985	4333	4610	5072	6168	21.6
Used Vehicles (Retail Only):											
Total (Used)	3237	2986	2550	3073	2280	2871	2409	2916	2912	3430	17.8
Grand Total	6532	6564	6342	6950	6496	6856	6742	7526	7984	9598	20.2

* Self reported data by survey

** There is one new dealership reported in 1996 and another new one in 1997

*** 2002 figures have been revised due to a reporting error.

Motor Vehicle Registration

<u>Year</u>	<u>Passenger</u>	<u>Trucks</u>	<u>Cycles</u>	<u>Total</u>	<u>Increase</u>	<u>% Increase</u>	<u>Ten Year Increase</u>	
2005	56,716	24,188	1,960	82,864	7,573	10.1		
2004	51,173	22,471	1,647	75,291	4,588	6.5	2005	82,864
2003	47,782	21,616	1,305	70,703	2,434	3.6	1996	52,993
2002	46,139	20,927	1,203	68,269	2,087	3.2	Increase	29,871
2001	44,253	20,867	1,062	66,182	1,407	2.2	Percent	56.4
2000	43,208	20,655	912	64,775	520	0.8		
1999	43,052	20,480	723	64,255	2,995	4.9	Average	
1998	40,736	19,836	688	61,260	6,349	11.6	Yearly	
1997	36,007	18,434	470	54,911	1,918	3.6	Increase	2,987
1996	34,400	18,148	445	52,993	1,877	3.7		
1995	32,683	17,998	435	51,116	3,509	7.4		
1994	30,898	16,333	376	47,607	3,188	7.2		
1993	28,785	15,271	363	44,419	2,150	5.1		
1992	27,323	14,607	339	42,269	1,642	4.0		
1991	26,261	14,033	333	40,627	1,626	4.2		
1990	25,173	13,500	328	39,001				

*There appears to be an error in the 1998 data, the Department of Motor Vehicles believe that the total registration is correct for 1998 and may be in error in 1997 and 1996.

Employment and Earnings for Faulkner County

	1997			2002			2003				2004				Increase From 1997 Through 2004					
	Firms	Employees	Earnings *	Firms	Employees	Earnings *	Firms	Employees	Earnings *	Weekly Earnings	Firms	Employees	Earnings *	Weekly Earnings	Firms		Employees		Earnings *	
															N	%	N	%	Amount	%
Manufacturing	85	7,242	\$195,556,918	111	6,035	\$199,885,170	111	5,125	\$187,012,442	\$689.62	113	5,062	\$184,553,604	\$701.13	28	32.9	-2,180	-2,564.7	-\$11,003,314	-5.63
Construction	231	2,329	\$55,843,933	259	2,452	\$67,228,715	286	2,561	\$70,544,826	529.73	305	2,607	\$6,036,006	560.89	74	32.0	278	120.3	\$20,192,073	36.16
Transportation & Public Services	50	602	\$17,407,366	62	753	\$24,743,374	62	708	\$25,871,888	702.73	61	587	\$20,576,996	674.13	11	22.0	-15	-30.0	\$3,169,630	18.21
Wholesale & Retail Trade	491	6,543	\$87,544,399	451	4,961	\$92,174,499	456	4,952	\$96,713,825	375.58	480	5,363	\$107,600,993	385.84	-11	-2.2	-1,180	-240.3	\$20,056,594	22.91
Information				37	366	\$10,016,633	36	358	\$10,235,700	549.83	38	390	\$11,807,778	582.24						
Financial, Insurance & Real Estate	131	738	\$18,852,337	234	1,206	\$33,369,764	239	1,268	\$36,051,817	546.77	249	1,296	\$37,923,218	562.73	118	90.1	558	426.0	\$19,070,881	101.16
Professional & Business Services				246	4,711	\$194,964,308	264	4,718	\$203,070,922	827.73	285	5,036	\$230,814,536	881.40						
Educational & Health Services				235	3,972	\$112,458,527	248	4,190	\$118,179,735	542.41	257	4,320	\$128,167,534	570.55						
Leisure & Hospitality Services				168	3,243	\$30,136,401	168	3,324	\$31,711,439	183.46	172	3,502	\$33,656,260	184.82						
Other Services				124	637	\$11,065,067	126	591	\$11,014,398	358.40	129	600	\$11,584,618	371.30						
Total Services	483	7,088	\$172,406,627	773	12,563	\$348,624,303	806	12,823	\$363,976,494	545.86	2,089	28,763	\$42,721,543	563.44	1,606	332.5	21,675	4,487.6	\$670,314,916	388.80
Government	53	4,667	\$117,888,412	55	5,071	\$149,460,208	55	5,171	\$156,558,927	582.24	54	5,435	\$170,061,148	601.73	1	1.9	768	1,449.1	\$52,172,736	44.26
Natural Resources	30	164	\$3,095,315	9	55	\$1,795,165	11	62	\$2,016,705	625.53	9	48	\$1,715,643	687.36	-21	-70.0	-116	-386.7	-\$1,379,672	-44.57
Total	1,554	29,373	\$668,595,307	1,991	33,462	\$927,297,831	2,062	33,028	\$948,982,624	551.08	2,150	34,246	\$1,014,498,334	569.69	596	38.4	4,873	16.6	\$345,903,027	51.74
Average Annual Earnings			\$22,762			\$27,712			\$28,733				\$29,624						\$6,862	30.14

* Earnings Include Fringe Benefits

Data Source: Arkansas Employment & Security Division

Agriculture Production In Faulkner County

Crop	Income From Production Sold										Percent Increase
	1996	1997	1998	1999	2000	2001	2002	2003	2004	2005	2004-2005
Beef*	\$12,000,000	\$16,000,000	\$15,200,000	\$18,500,000	\$19,600,000	\$16,000,000	\$15,750,000	\$17,000,000	\$16,200,000	\$18,000,000	11.11 %
Greenhouses	850,000	1,000,000	2,000,000	4,000,000	4,000,000	4,000,000	4,500,000	5,000,000	5,500,000	5,500,000	0.00
Dairy	4,900,000	4,637,500	4,004,000	3,733,800	3,643,750	3,377,500	3,564,000	3,250,000	3,458,000	3,094,000	-10.53
Soybeans	2,126,250	2,318,400	,990,000	957,000	899,460	1,250,000	1,540,000	2,775,000	2,178,000	1,786,400	-17.98
Rice	1,280,000	1,211,250	1,316,250	1,290,900	1,509,300	1,544,400	1,218,400	1,445,000	1,512,000	1,305,000	-13.69
Fruits & Vegetables	200,000	350,000	600,000	750,000	800,000	800,000	750,000	800,000	900,000	800,000	-11.11
Forestry	700,000	800,000	900,000	1,500,000	1,350,000	500,000	700,000	650,000	600,000	700,000	16.67
Hay**	2,400,000	3,750,000	3,125,000	3,000,000	5,400,000	3,900,000	500,000	600,000	600,000	100,000	-83.33
Silage	500,000	250,000	200,000	300,000	250,000	0	240,000	429,000	250,000	225,000	-10.00
Corn	75,000	119,700	81,000	33,000	53,865	92,400	108,000	303,750	338,000	220,000	-34.91
Wheat	710,400	770,000	560,000	614,800	614,800	390,000	435,000	250,000	502,500	300,000	-40.30
Hogs	95,000	107,000	78,000	82,500	95,000	30,000	25,000	25,000	35,000	45,000	28.57
Grain Sorghum	9,500	12,000	4,500	6,000	0	0	0	0	0	0	
Oats	1,000	0	0	0	0	0	0	0	0	0	
Total	\$25,847,150	\$31,325,850	\$29,058,750	\$34,768,000	\$38,216,175	\$31,884,300	\$29,330,400	\$32,527,750	\$32,073,500	\$32,075,400	-1.40
Percent Change	11.19%	21.20%	-7.24%	19.65%	9.92%	-16.57%	-8.01%	10.90%	-1.40%	0.01%	

Value of products not sold but produced and consumed on farms = \$4,440,000.

* Fifth in the state for beef cattle production. Herds have been liquidated due to drought

** Only 3% of production is sold resulting in \$100,000 income from sale of hay. Remainder is fed to beef and dairy cattle.

Gross Production, Not Necessarily Sold

	Number of Acres or Head In Production		Total Yield			Percent Increase In Yield	Yield Rate			Percent Increase In Yield Rate
	2004	2005	2004	2005		2004-2005	2004	2005		2004-2005
	Rice	2,800	2,900	420,000		435,000	Bushels	3.57		150.0
Soybeans	11,000	11,000	396,000	308,000	Bushels	-22.22	36.0	28.0	Bushels/Acre	-22.22
Corn	800	1,000	104,000	220,000	Bushels	111.54	130.0	110.0	Bushels/Acre	-15.38
Hay	60,000	60,000	300,000	150,000	Bales	-50.00	5.0	2.5	Bales/Acre	-50.00
Wheat	3,000	2,000	150,000	100,000	Bushels	-33.33	53.0	50.0	Bushels/Acre	-5.66
Beef**	32,000	30,000	32,000	32,000	Head Sold	0.00				
Hogs	100	100	1,000	1,000	Head Sold	0.00				
Dairy # Head	1,900	1,700	2,666,000	23,800,000	Pounds	792.72	14,000	14,000	Lbs. per cow	0.00

Comments on 2005 Agriculture

(1.) Drought lowered yields of crops and prices were depressed.

(2.) Beef herds were liquidated or reduced in size and two dairy herds were sold due to economic conditions.

(3.) Beef prices were up a little and substantially more head were sold.

Data Source: Bill Dodgen, Cooperative Extension Service-Faulkner County

Impact of Tourism on Arkansas and Faulkner County

Total Travel Expenditures											% Increase		
	1995	1996	1997	1998	1999	2000	2001*	2002**	2003**	2004**	From 2003	Nine Year Increase	
											7.90	Amount	Percent
State	\$3,067,406,000	\$3,153,293,000	\$3,219,512,000	\$3,418,800,000	\$3,622,218,600	\$3,843,173,935	\$3,812,245,000	\$3,918,987,404	\$3,942,501,328	\$4,253,958,933		\$1,186,552,933	38.68
Faulkner County	\$41,813,703	\$42,460,276	\$43,689,519	\$47,415,907	\$51,359,657	\$54,061,722	\$54,871,074	\$53,866,263	\$55,510,938	\$62,158,168	11.97	\$20,344,465	48.66
Visitors(Person Trips)***													
State	18,356,000	18,264,000	18,336,000	19,178,000	19,801,000	20,336,000	19,848,000	19,927,000	19,668,000	20,691,089	5.20	\$2,335,089	12.72
Faulkner County	265,937	261,099	264,145	285,596	301,637	307,364	307,173	294,551	297,915	325,450	9.24	\$59,513	22.38
Total Travel Expenditure Per Visitor													
State	\$167.11	\$172.65	\$175.58	\$178.27	\$182.93	\$188.98	\$192.07	\$196.67	\$200.45	\$205.59	2.56	\$38	23.03
Faulkner County	\$157.23	\$162.62	\$165.40	\$166.02	\$170.27	\$175.89	\$178.63	\$182.88	\$186.33	\$190.99	2.50	\$34	21.47
State Tax Receipts ¹													
State	\$136,906,000	\$141,898,000	\$144,878,000	\$153,846,000	\$162,999,000	\$172,943,000	\$213,972,000	\$219,778,656	\$220,780,074	\$238,221,700	7.90	\$101,315,700	74.00
Faulkner County	\$2,166,275	\$2,212,491	\$2,275,995	\$2,471,623	\$2,673,368	\$2,822,473	\$3,574,138	\$3,514,613	\$3,616,113	\$4,048,819	11.97	\$1,882,544	86.90
1. Includes Gasoline Tax, Sales Tax, Employee Taxes & Fees													
Local Tax Receipts													
State	\$ 58,297,000	\$ 59,913,000	\$61,171,000	\$64,975,000	\$68,822,000	\$73,020,000	\$78,448,000	\$80,644,357	\$82,792,528	\$89,333,138	7.90	\$31,036,138	53.24
Faulkner County	\$782,105	\$792,879	\$815,362	\$885,578	\$958,909	\$1,009,788	\$984,123	\$968,277	\$1,016,930	\$1,138,383	11.94	\$356,278	45.55
Number Employed													
State	46,891	46,774	46,868	47,944	48,723	49,381	57,497	57,612	57,785	59,287	2.60	\$12,396	26.44
Faulkner County	727	720	724	749	770	778	925	905	919	961	4.57	\$234	32.19
Payroll of Employees Resulting From Tourism													
State	\$526,494,000	\$542,366,000	\$553,756,000	\$586,808,000	\$623,018,000	\$661,026,000	\$842,278,000	\$865,861,710	\$871,292,794	\$940,124,925	7.90	\$413,630,925	78.56
Faulkner County	\$7,451,656	\$7,567,472	\$7,784,685	\$8,430,381	\$9,147,505	\$9,622,492	\$12,093,475	\$11,858,533	\$12,198,185	\$13,641,796	11.83	\$6,190,140	83.07
Average Annual Pay of Those Employed By Tourism													
State	\$11,228	\$11,595	\$11,815	\$12,239	\$12,787	\$13,386	\$14,649	\$15,029	\$15,078	\$15,857	5.17	\$4,629	41.23
Faulkner County	\$10,250	\$10,510	\$10,752	\$11,256	\$11,880	\$12,368	\$13,074	\$13,103	\$13,273	\$14,195	6.95	\$3,946	38.49

*Data revised.

** Preliminary Figures

*** A person trip is one person traveling 100 miles or more one way and/or spending one night away from his point of origin.

Source: Arkansas Department of Tourism & Travel